



MovinCool® Climate Pro® K Series

# MovinCool Climate Pro K12

## FAMILY FEATURES

Sleek, modern design

Wrap around bumper system protects against scratches & dents

Built-in exhaust flanges with protective grille

Condensate tank hidden behind easy-open access door

Convenient cord storage cubby on rear of unit


Connectivity enabled



## PERFORMANCE

|                               |                     |
|-------------------------------|---------------------|
| Ambient Operating Range       | <b>65-95°F</b>      |
| Cooling Capacity              | <b>12,000 btu/h</b> |
| Supply Airflow h/m/l cfm      | <b>410/380/340</b>  |
| Max Supply/Cold Duct Length   | <b>30 feet</b>      |
| Exhaust Airflow h/m/l cfm     | <b>760/700/640</b>  |
| Max Hot/Exhaust Duct Length   | <b>60 feet</b>      |
| Sound Level High (w/out duct) | <b>61 dB</b>        |

## APPLICATION

|                              |   |
|------------------------------|---|
| Voltage @ 60Hz               | <b>115</b>  |
| Recommended Breaker Size (A) | <b>15</b>   |
| Amps (A)                     | <b>10.6</b>   |
| Min/Max Voltage              | <b>104-127</b>  |
| Power Cord Gauge             | <b>14AWG-3 Core</b>   |
| Power Cord Length            | <b>10 feet</b>  |
| Plug Receptacle Requirement  |  <b>NEMA 5-15P</b> |

## SHIPPING/LOGISTICS/ HANDLING/QUALITY

|               | Shipping | Out of Carton |
|---------------|----------|---------------|
| Weight (lbs.) | 208      | 166           |
| Height (in.)  | 54       | 47            |
| Width (in.)   | 26       | 22            |
| Depth (in.)   | 31       | 27            |

RoHS Restriction of Hazardous Substances Standard compliant  
UL 60335 and UL 60335-2-40 compliant

A Carrier Company

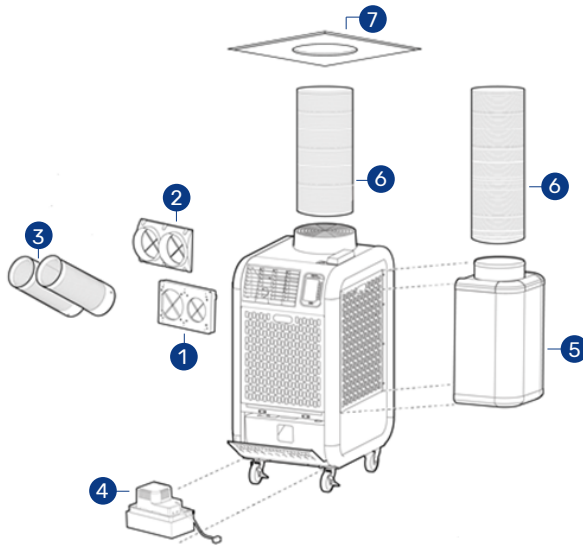


**spot-coolers.com**  
**800-367-8675**

©2021 Carrier. All Rights Reserved.

## ACCESSORIES

### NOZZLE APPLICATION

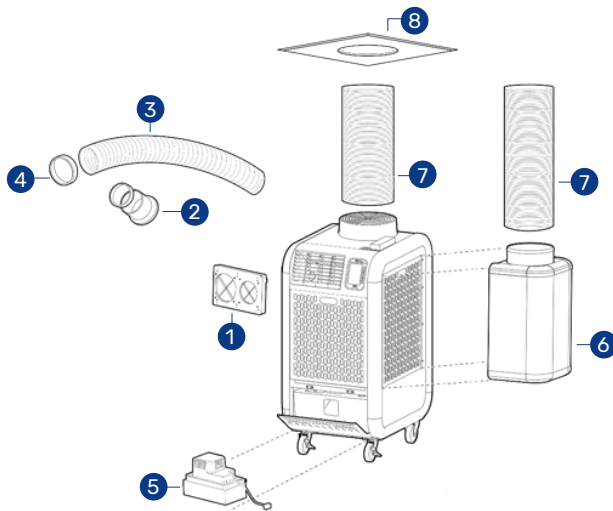


| # | Part No.      | Description                                   |
|---|---------------|---|
| 1 | 481769-0280   | 5" Two Hole Base Plate                        |
| 2 | 481170-0480   | 5" Two Hole Quick Connect Flange              |
| 3 | 484209-0480   | 5" Quick Connect Nozzle**                     |
| 4 | 484789-0210   | Condensate Pump, 115v                         |
| 5 | 484350-1160   | Plenum Condenser Air                          |
| 6 | 481744-0062   | 12" Self-Supported Duct                       |
| 7 | 484490-1030   | Ceiling Tile Kit, 12-in hole, metal           |
| * | LA146373-8280 | Ceiling Tile Kit, 12-in hole, plastic         |
| * | LAY45771-0060 | Flexible Air Duct, 8' by 12"                  |
| * | HDK-12        | 2' x 2' Ceiling Tile with 8' of 12" Flex Duct |

\* Not Pictured

\*\* Sold Individually

### DUCT HOSE APPLICATION



| # | Part No.      | Description                                   |
|---|---------------|---|
| 1 | 481769-0280   | 5" Two Hole Base Plate                        |
| 2 | 481170-0450   | 5" Flange Ext. Duct**                         |
| 3 | 481744-0090   | 5" Self-Supported Duct**                      |
| 4 | 481851-0200   | 5" Trim Ring**                                |
| 5 | 484789-0210   | Condensate Pump, 115v                         |
| 6 | 484350-1160   | Plenum Condenser Air                          |
| 7 | 481744-0062   | 12" Self-Supported Duct                       |
| 8 | 484490-1030   | Ceiling Tile Kit, 12-in hole, metal           |
| * | LA146373-8280 | Ceiling Tile Kit, 12-in hole, plastic         |
| * | LAY45771-0060 | Flexible Air Duct, 8' by 12"                  |
| * | HDK-12        | 2' x 2' Ceiling Tile with 8' of 12" Flex Duct |

\* Not Pictured

\*\* Sold Individually