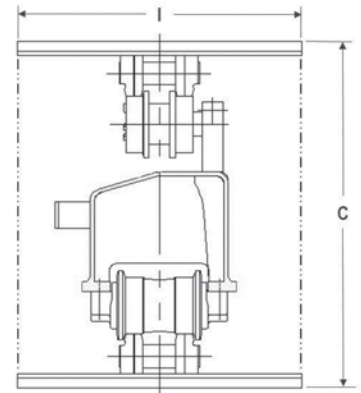
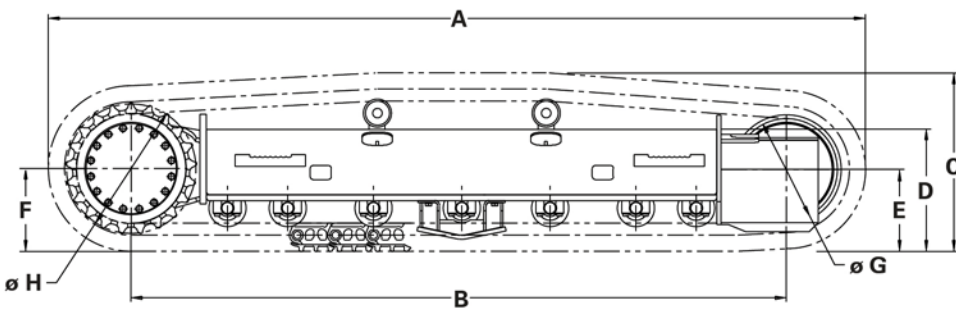


303.5E2CR undercarriages 490-3503

Right and left frame assemblies w carbody.

GENERAL DIMENSIONS (in/mm)		303.5E2CR	LOWER WEIGHT (lb/kg)	303.5E2CR
Overall Length	A	87.4/2220	303.5E2CR (estimated)	2205/1000
Track on Ground	B	69.3/1760		
Overall Height	C	22.2/565	LOAD CAPACITY (lb/kg)	
Frame Height	D	15.1/383.6	Light Duty	9000/4100
Idler Centerline	E	9.2/233	Medium Duty	8200/3700
Sprocket Centerline	F	9.8/248.8	Heavy Duty	N/A
Tread Diameter	G	12.01/305		
Pitch Diameter	H	14.8/376.6		
Track Shoe Width (Rubber)	I	300 mm		
Number of Track Rollers Per Frame:		4		
Number of Carrier Rollers Per Frame:		1		



The information contained in this specification sheet is for preliminary design layout only. A detailed drawing in 2D or 3D format should be requested for final design. All dimensions shown in inches (mm) and are standard except as noted.

Application Parameters

- Max Tractive Effort lb/kg: 7516/3405
- Working Hydraulic pressure: 3553 psi (24.5 Mpa)
- Final Drive Type: Caterpillar
- Final Drive Gear Ratio: 45.2:1
- Motor Displacement (CC): 22.1/ 13.1
- Max Travel Speed: <2.9 mph (4.6 kmh)
- Two Speed Shift Pressure: 595 PSI (4.1 Mpa)

Definitions

Suggested maximum machine Gross Vehicle Weight (GVW) for different machine classes.

- Light Duty: Little or no movement and little impact (e.g., mobile crushers and pavers).
- Medium Duty: Moderate frequency of movement and moderate impact (e.g., blast hole drills).
- Heavy Duty: High frequency of movement and high impact (e.g., feller bunchers).

<https://oemsolutions.cat.com/StandardProducts>

Caterpillar does not accept liability for product if used for an application outside the product parameters.

