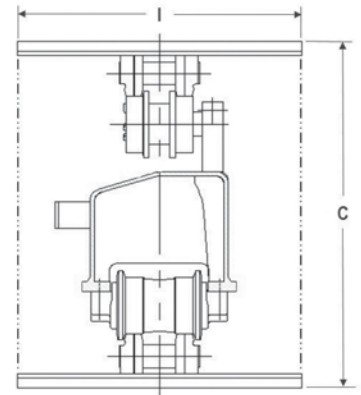
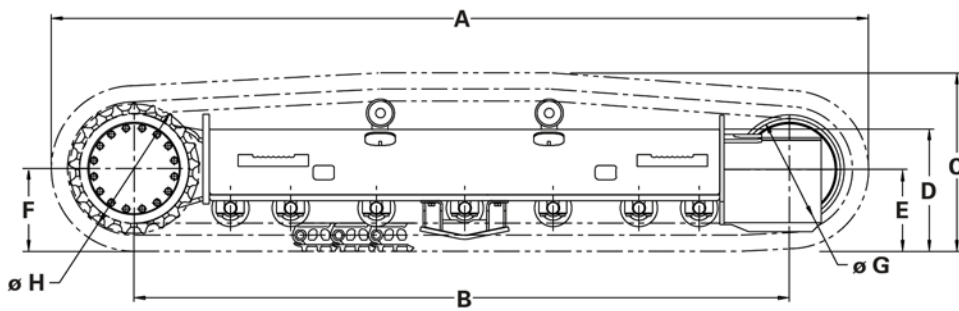


# 305E2CR undercarriages 482-4382

Right and left frame assemblies w/o carbody.

GENERAL DIMENSIONS (in/mm)		305E2CR	LOWER WEIGHT (lb/kg)	305E2CR
Overall Length (With STD Track)	A	101.6/2580	With Shipping Skid	2788/1265
Track on Ground	B	81.3/2065		
Overall Height (With STD Track)	C	21.4/544		
Frame Height	D	14.4/365.6		
Idler Centerline	E	10.58/268.75		
Sprocket Centerline	F	10.61/269.5		
Tread Diameter	G	13.2/335		
Pitch Diameter	H	16.37/415.8		
Track Shoe Width (Rubber)	I	400mm steel		
Number of Track Rollers Per Frame:		4		
Number of Carrier Rollers Per Frame:		1		
			LOAD CAPACITY (lb/kg)	
			Light Duty	13,200/6000
			Medium Duty	12,000/5455
			Heavy Duty	N/A



The information contained in this specification sheet is for preliminary design layout only. A detailed drawing in 2D or 3D format should be requested for final design. All dimensions shown in inches (mm) and are standard except as noted.

## Application Parameters

- Max Tractive Effort: 10,161 lb/ 4619 kg
- Working Hydraulic pressure: 3553 psi/ 245 bar
- Final Drive Type: Caterpillar
- Final Drive Gear Ratio: 58.4:1
- Motor Displacement (CC): 27.5/15.5
- Max Travel Speed: < 3.3 mph/5.3kph
- Shift Pressure 595psi/4.10 MPa

## Definitions

Suggested maximum machine Gross Vehicle Weight (GVW) for different machine classes.

- Light Duty: Little or no movement and little impact (e.g., mobile crushers and pavers).
- Medium Duty: Moderate frequency of movement and moderate impact (e.g., blast hole drills).
- Heavy Duty: High frequency of movement and high impact (e.g., feller bunchers).

<https://oemsolutions.cat.com/StandardProducts>

Caterpillar does not accept liability for product if used for an application outside the product parameters.

