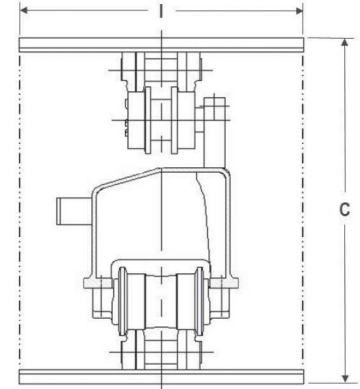
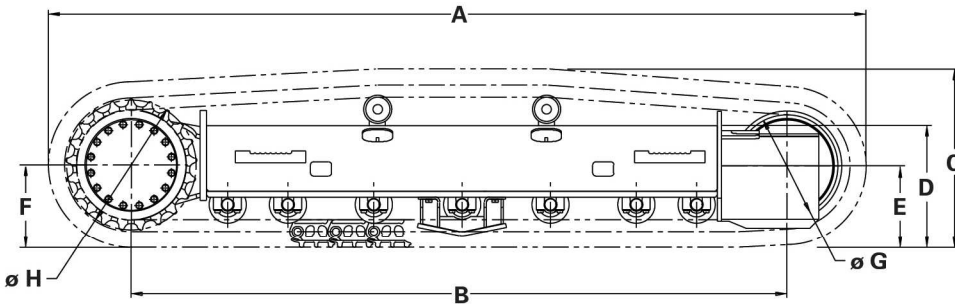


# 308E2 undercarriages 506-4344

Right and left frame assemblies w/o carbody.

GENERAL DIMENSIONS (in/mm)		308E2	LOWER WEIGHT (lb/kg)	308E2
Overall Length	A	114.5/2909	With 450 mm (Estimate)	3,800/1727
Track on Ground	B	89.8/2280		
Overall Height	C	26.38/670	<b>LOAD CAPACITY (lb/kg)</b>	
Frame Height	D	17.0/432	Light Duty	20,000/9100
Idler Centerline	E	12.24/311	Medium Duty	15,500/7000
Sprocket Centerline	F	12.87/327	Heavy Duty	N/A
Tread Diameter	G	15.75/400		
Pitch Diameter	H	20.57/522.5		
Track Shoe Width (Triple Grouser)	I	450 mm		
Number of Track Rollers Per Frame:		5		
Number of Carrier Rollers Per Frame:		1		



The information contained in this specification sheet is for preliminary design layout only. A detailed drawing in 2D or 3D format should be requested for final design. All dimensions shown in inches (mm) and are standard except as noted.

## Application Parameters

- Max Tractive Effort: 14,500 lb/ 6591 kg
- Working Hydraulic pressure: 4061 psi/ 280 bar
- Final Drive Gear Ratio: 64.25:1
- Motor Displacement (CC): 32.6/20.2
- Max Travel Speed: < 3.3 mph/5.3kph

## Definitions

Suggested maximum machine Gross Vehicle Weight (GVW) for different machine classes.

- Light Duty: Little or no movement and little impact (e.g., mobile crushers and pavers).
- Medium Duty: Moderate frequency of movement and moderate impact (e.g., blast hole drills).
- Heavy Duty: High frequency of movement and high impact (e.g., feller bunchers).

<https://oemsolutions.cat.com/StandardProducts>

Caterpillar does not accept liability for product if used for an application outside the product parameters.

