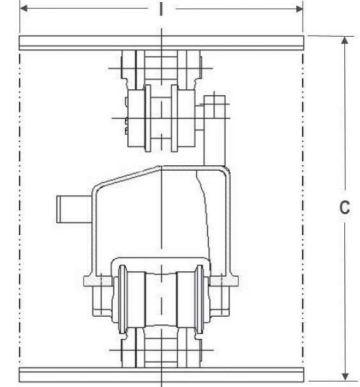
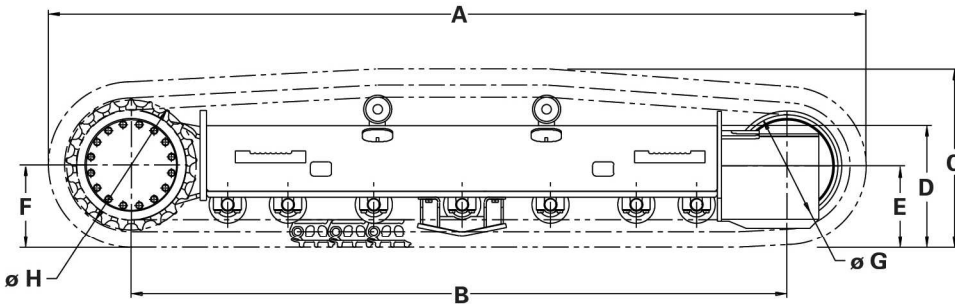


# 312 undercarriages 9Q-5871

Right and left frame assemblies w/o carbody.

GENERAL DIMENSIONS (in/mm)		312	LOWER WEIGHT (lb/kg)	312
Overall Length	A	137.4/3490	With 500 mm Shoes	6,680/3030
Track on Ground	B	109.4/2780		
Overall Height	C	30.83/783	<b>LOAD CAPACITY (lb/kg)</b>	
Frame Height	D	20.16/512	Light Duty	45,000/20400
Idler Centerline	E	14.21/361	Medium Duty	35,000/15900
Sprocket Centerline	F	14.37/365	Heavy Duty	30,000/13600
Tread Diameter	G	17.95/456		
Pitch Diameter	H	22.9/581.7		
Track Shoe Width (Rubber)	I	500 mm		
Number of Track Rollers Per Frame:		6		
Number of Carrier Rollers Per Frame:		1		



The information contained in this specification sheet is for preliminary design layout only. A detailed drawing in 2D or 3D format should be requested for final design. All dimensions shown in inches (mm) and are standard except as noted.

## Application Parameters

- Max Tractive Effort: 27,800 lb/ 12,610 kg
- Working Hydraulic pressure: 5000 psi/ 345 bar
- Final Drive Type: Caterpillar
- Final Drive Gear Ratio: 50.58:1
- Motor Displacement (CC): 71.85/48.14
- Max Travel Speed: < 3.3 mph/5.3kph

## Definitions

Suggested maximum machine Gross Vehicle Weight (GVW) for different machine classes.

- Light Duty: Little or no movement and little impact (e.g., mobile crushers and pavers).
- Medium Duty: Moderate frequency of movement and moderate impact (e.g., blast hole drills).
- Heavy Duty: High frequency of movement and high impact (e.g., feller bunchers).

<https://oemsolutions.cat.com/StandardProducts>

Caterpillar does not accept liability for product if used for an application outside the product parameters.

