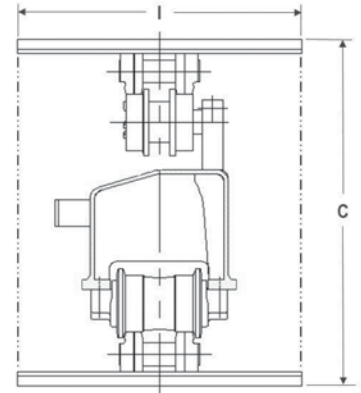
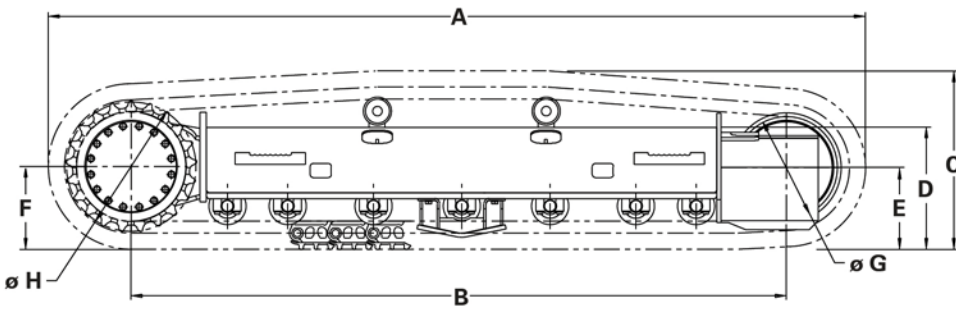


315L undercarriages 418-8755

Right and left frame assemblies w/o carbody and w/o track.

| GENERAL DIMENSIONS (in/mm) | | 315L | LOWER WEIGHT (lb/kg) | 315L |
|----------------------------------------------|---|-------------|------------------------------|--------------|
| Overall Length | A | 156.3/3971 | Trackless | 4720/2141 |
| Track on Ground | B | 124.6/3166 | | |
| Overall Height | C | 35.8/889 | LOAD CAPACITY (lb/kg) | |
| Frame Height | D | 23.0/585 | Light Duty | 63,000/28600 |
| Idler Centerline | E | 16.1/409 | Medium Duty | 51,000/23400 |
| Sprocket Centerline | F | 16.3/414 | Heavy Duty | 43,000/19500 |
| Tread Diameter | G | 19.96/507 | | |
| Pitch Diameter | H | 25.38/644.6 | | |
| Track Shoe Width | I | Trackless | | |
| Number of Track Rollers Per Frame: | | 7 | | |
| Number of Carrier Rollers Per Frame: | | 2 | | |
| ** Includes full length track guiding guards | | | | |



The information contained in this specification sheet is for preliminary design layout only. A detailed drawing in 2D or 3D format should be requested for final design. All dimensions shown in inches (mm) and are standard except as noted.

Application Parameters

- Max Tractive Effort: 44,630 lb/ 20,244 kg
- Working Hydraulic pressure: 5000 psi/ 345 bar
- Final Drive Type: L&S GFT 50
- Final Drive Gear Ratio: 84.2:1
- Motor Displacement (CC): 92/60
- Max Travel Speed: < 3.3 mph/5.3kph
- Parking Brake Torque: 17500 N-m
- Parking Brake Release Pressure: 75 psi / .517 MPa

Definitions

Suggested maximum machine Gross Vehicle Weight (GVW) for different machine classes.

- Light Duty: Little or no movement and little impact (e.g., mobile crushers and pavers).
- Medium Duty: Moderate frequency of movement and moderate impact (e.g., blast hole drills).
- Heavy Duty: High frequency of movement and high impact (e.g., feller bunchers).

<https://oemsolutions.cat.com/StandardProducts>

Caterpillar does not accept liability for product if used for an application outside the product parameters.

