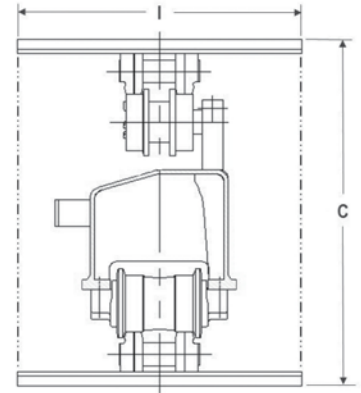
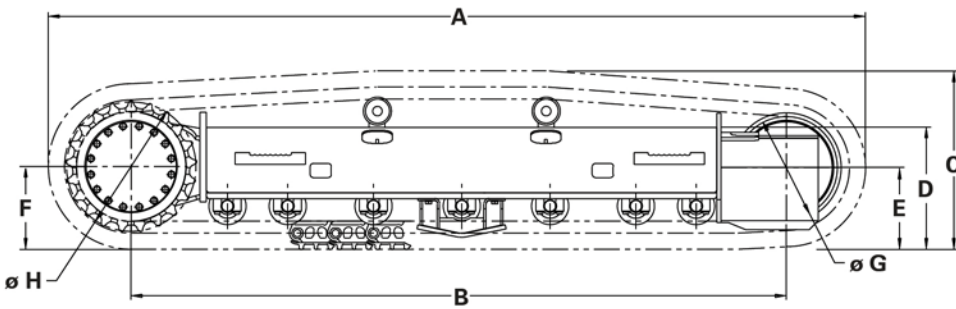


320L undercarriages 415-9579

Right and left frame assemblies w/o carbody and w/o track.

GENERAL DIMENSIONS (in/mm)		320L	LOWER WEIGHT (lb/kg)	320L
Overall Length (With Track Gp)	A	175/4434	Trackless	10049/4558
Track on Ground	B	143.5/3646		
Overall Height (With Track Gp)	C	37.2/944		
Frame Height (With Track Gp)	D	24.9/633		
Idler Centerline (With Track Gp)	E	16.0/407.5		
Sprocket Centerline (With Track Gp)	F	16.39/416.3		
Tread Diameter	G	19.96/507		
Pitch Diameter	H	25.4/644.6		
Track Shoe Width	I	Trackless		
Number of Track Rollers Per Frame:		8		
Number of Carrier Rollers Per Frame:		2		

LOAD CAPACITY (lb/kg)	
Light Duty	76000/34500
Medium Duty	62000/28100
Heavy Duty	53000/24000



The information contained in this specification sheet is for preliminary design layout only. A detailed drawing in 2D or 3D format should be requested for final design. All dimensions shown in inches (mm) and are standard except as noted.

Application Parameters

- Max Tractive Effort: 46382 lb/ 21039 kg
- Working Hydraulic pressure: 5000 psi/ 345 bar
- Final Drive Type: Caterpillar
- Final Drive Gear Ratio: 50.00
- Motor Displacement (CC): 143/87
- Max Travel Speed: < 3.3 mph/5.3kph

Definitions

Suggested maximum machine Gross Vehicle Weight (GVW) for different machine classes.

- Light Duty: Little or no movement and little impact (e.g., mobile crushers and pavers).
- Medium Duty: Moderate frequency of movement and moderate impact (e.g., blast hole drills).
- Heavy Duty: High frequency of movement and high impact (e.g., feller bunchers).

<https://oemsolutions.cat.com/StandardProducts>

Caterpillar does not accept liability for product if used for an application outside the product parameters.

