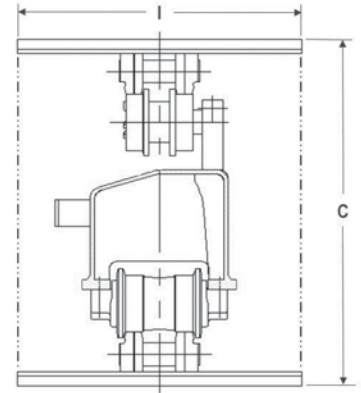
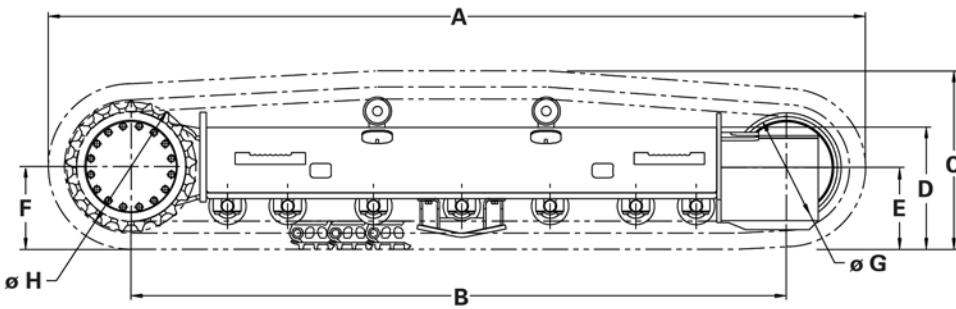


325EL undercarriages 461-6165

Right and left frame assemblies w/o carbody.

GENERAL DIMENSIONS (in/mm)		325EL	LOWER WEIGHT (lb/kg)	325EL
Overall Length	A	200/5080	With 700 mm Shoes	17,000/7711
Track on Ground	B	165.5/4203		
Overall Height	C	38.3/974		
Frame Height	D	23.7/605		
Idler Centerline	E	16.7/424		
Sprocket Centerline	F	18.3/465		
Tread Diameter	G	21.3/540		
Pitch Diameter	H	27.0/685.1		
Track Shoe Width (Triple Grouser)	I	700 mm		
Number of Track Rollers Per Frame:		9		
Number of Carrier Rollers Per Frame:		2		

LOAD CAPACITY (lb/kg)	
Light Duty	105,000/47700
Medium Duty	87,000/39500
Heavy Duty	70,000/31800



The information contained in this specification sheet is for preliminary design layout only. A detailed drawing in 2D or 3D format should be requested for final design. All dimensions shown in inches (mm) and are standard except as noted.

Application Parameters

- Final Drive Type: Caterpillar
- Final Drive Gear Ratio: 66.2:1
- Motor Displacement: 142.7cc/87cc
- Max Travel Speed: < 3.3 mph/5.3kph
- Recoil Preload: 55116 lbs/ 25000 kg
- Link Pitch: 7.98 in/ 202.8 mm

Definitions

Suggested maximum machine Gross Vehicle Weight (GVW) for different machine classes.

- Light Duty: Little or no movement and little impact (e.g., mobile crushers and pavers).
- Medium Duty: Moderate frequency of movement and moderate impact (e.g., blast hole drills).
- Heavy Duty: High frequency of movement and high impact (e.g., feller bunchers).

<https://oemsolutions.cat.com/StandardProducts>

Caterpillar does not accept liability for product if used for an application outside the product parameters.

